

This portion of roadway will be closed for construction

Eastbound mainlanes traffic will be routed on to new pavement.

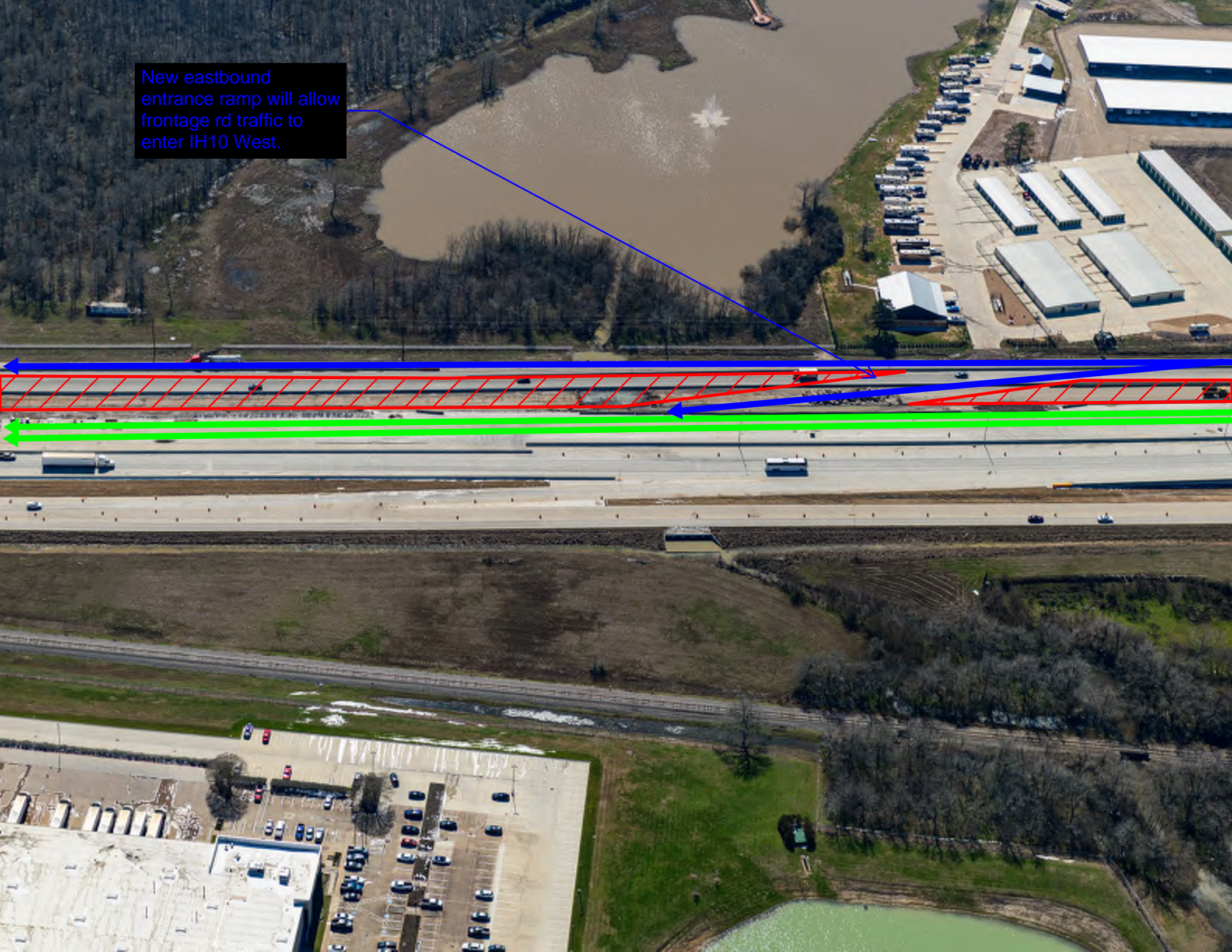


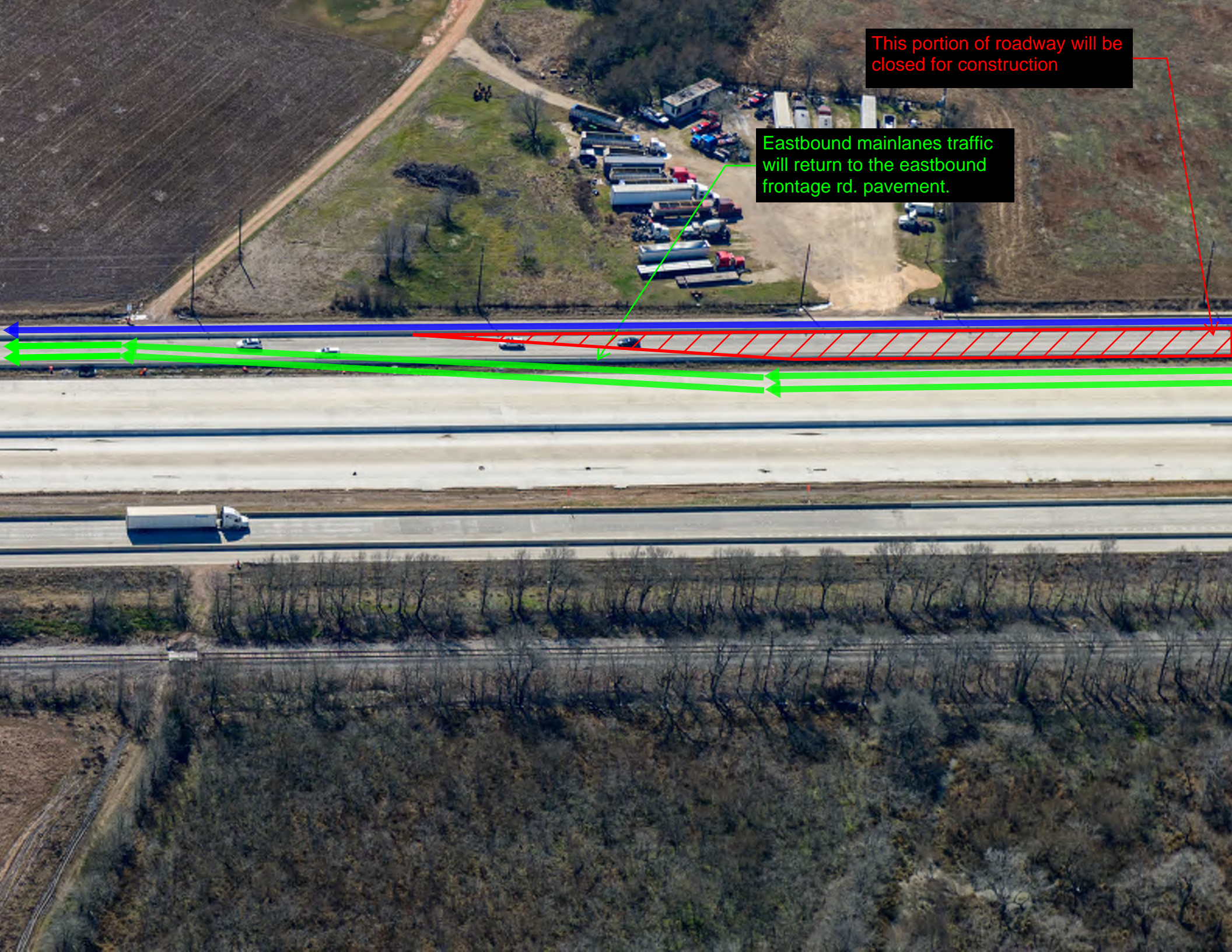
This portion of roadway will be closed for construction

Eastbound mainlanes traffic will travel across the new FM 1458 Overpass.



New eastbound entrance ramp will allow frontage rd traffic to enter IH10 West.





This portion of roadway will be closed for construction

Eastbound mainlanes traffic will return to the eastbound frontage rd. pavement.